

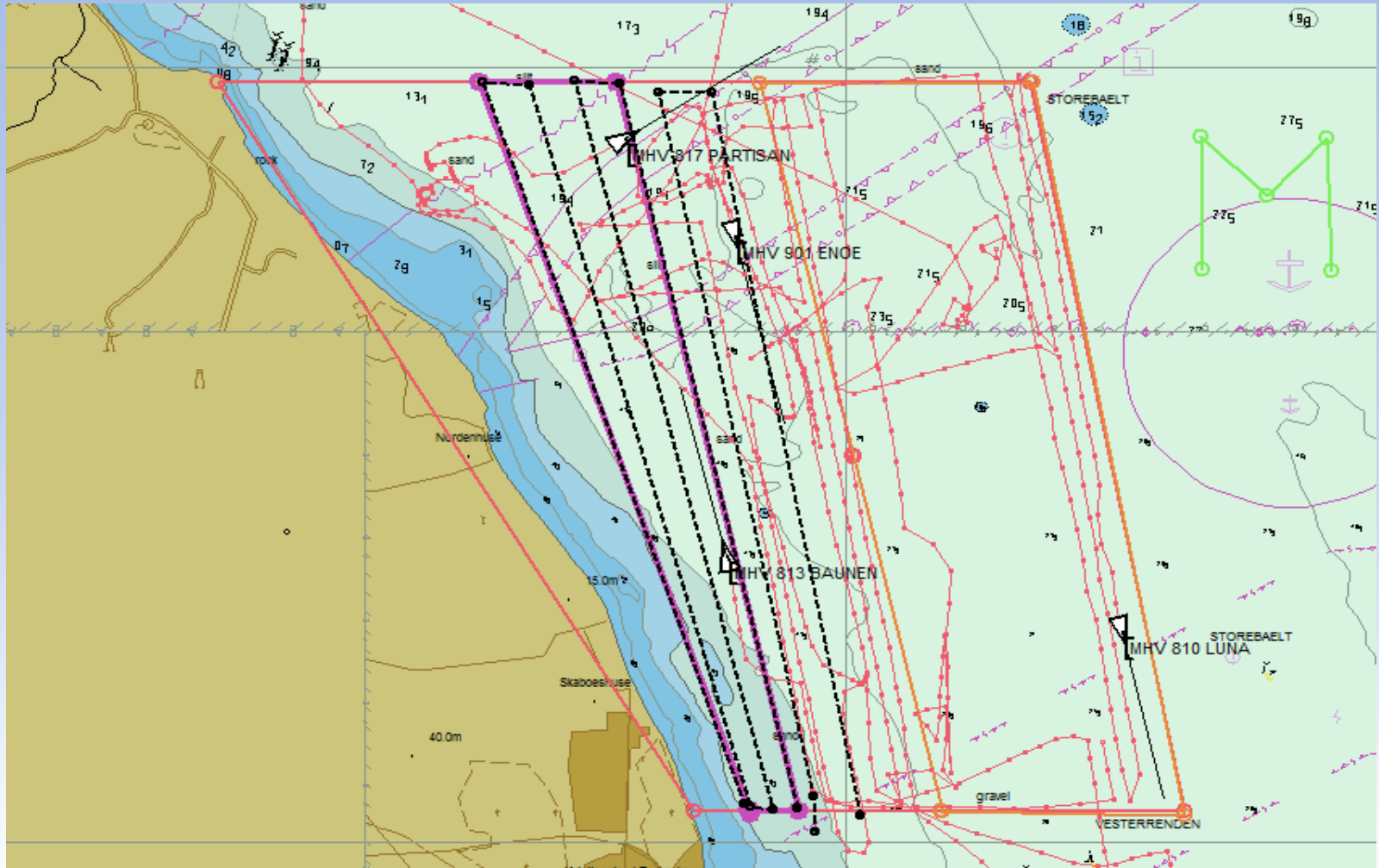


Potential solution Vessel Operations Co- ordination Tool (VOCT)

Thomas Christensen and
Mads Bentzen Billesø
Danish Maritime Authority,
ACCSEAS Project



Vessels Operations Coordination Tool (VOCT)



Vessels Operations Coordination Tool

The screenshot displays the Vessels Operations Coordination Tool interface, divided into two main panels: 'Search And Rescue - Planning' and 'Search And Rescue - Tracking'.

Search And Rescue - Planning Panel:

- Status:** Rapid Response
- Date and Time:**
 - Time of Last Known Position (LKP): 19:55 - 25/11
 - Time of Commence Search Start: 21:30 - 25/11
 - Time elapsed: 1 hour : 35 minutes
- Last Surface Drifts dw continuation:**
 - Direction: 13.89°
 - Speed: 0.68kn/h
- Position of Datum to LKP:**

Latitude	Longitude	RDV	Radius
55 33.250N	012 43.169E	1.08 nm	0.62 nm
- Positions of the Search Area:**

	Latitude	Longitude
A	55 33.885N	012 42.484E
B	55 33.833N	012 44.279E
C	55 32.616N	012 43.834E
D	55 32.868N	012 42.040E
- Area [nm²]:** 1.10
- Buttons:** Recopen Calculations, Manage SRUs, Effort Allocation, Open Tracking Window
- Effort Allocation Table:**

Name	Track Spacing	Visible
- Search Patterns Table:**

Name	SearchPtn	Visible	Dynamic

Search And Rescue - Tracking Panel:

- Vessels currently tracked:**

Name	Status	Last Msg	Visible
MHV 911 ...	ACCEPTED	11/25 19:2...	<input checked="" type="checkbox"/>
- Buttons:** Manage SAR Tracking

The main map area shows a search area (shaded green) with various buoys (e.g., buoy NO 12, 13, 14, 15, 16, 17) and a vessel (MHV 911 BOPA) with its search pattern (red and green circles) and drift lines (dashed lines).



Vessels Operations Coordination Tool



Case

A large product tanker have collided with Drogden Light House. The product tanker leaves the collision with minor damages and drops anchor to assess damages. Drogden Light House is severely damaged and fire erupts. The Captain on the product tanker observes three persons in life jackets jump in the water from the light house and drift off in a southerly direction.

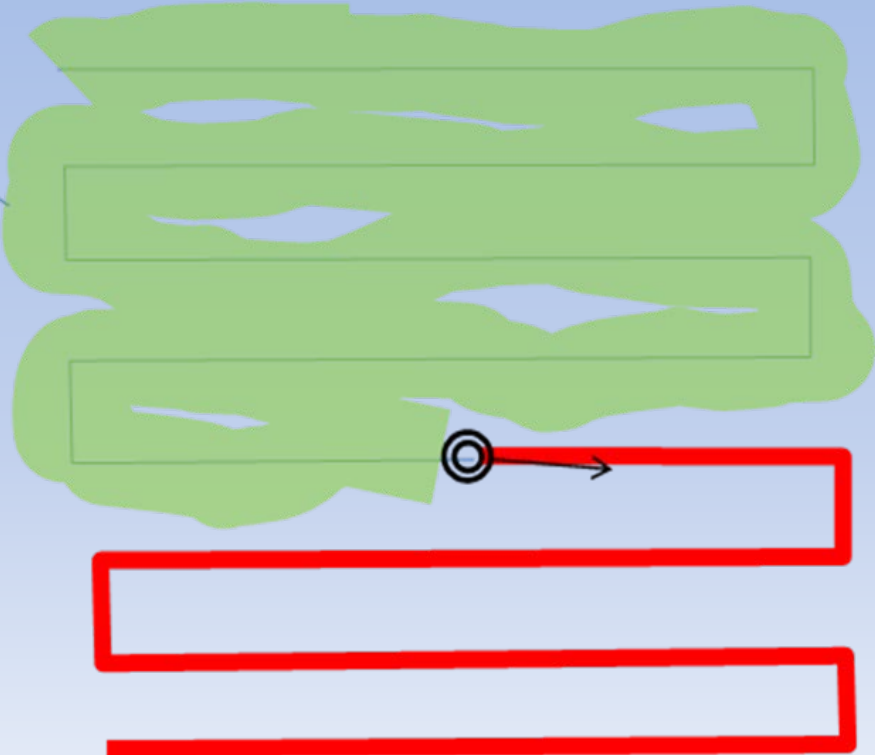
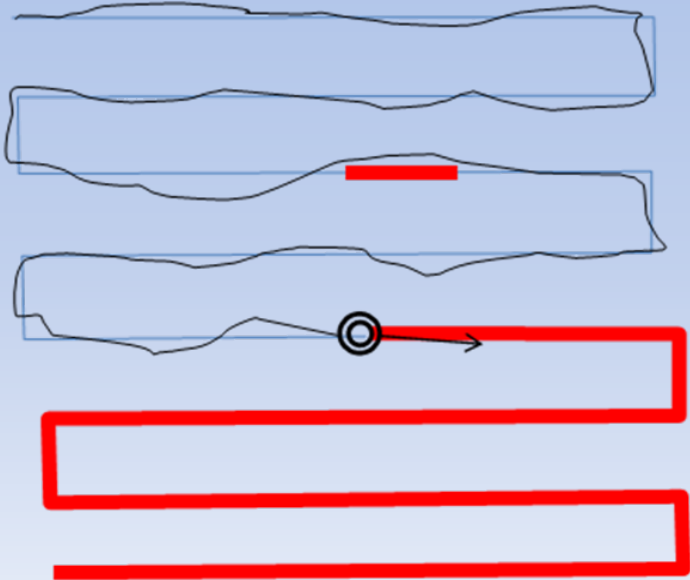
Drogden Light House (pos: 55-32,2N ; 012-42,7E)

Current: South 2,5 kn

Wind: Westerly 8 m/s

Visibility: 3 nm

Stroke width depend on
sea state, visibility
and eye height





Thank you for your time

Thomas Christensen and
Mads Bentzen Billesø
Maritime Technology and e-Navigation
Danish Maritime Authority
thc@dma.dk / mcb@dma.dk

