



# ACCSEAS

## 1<sup>st</sup> Annual Conference

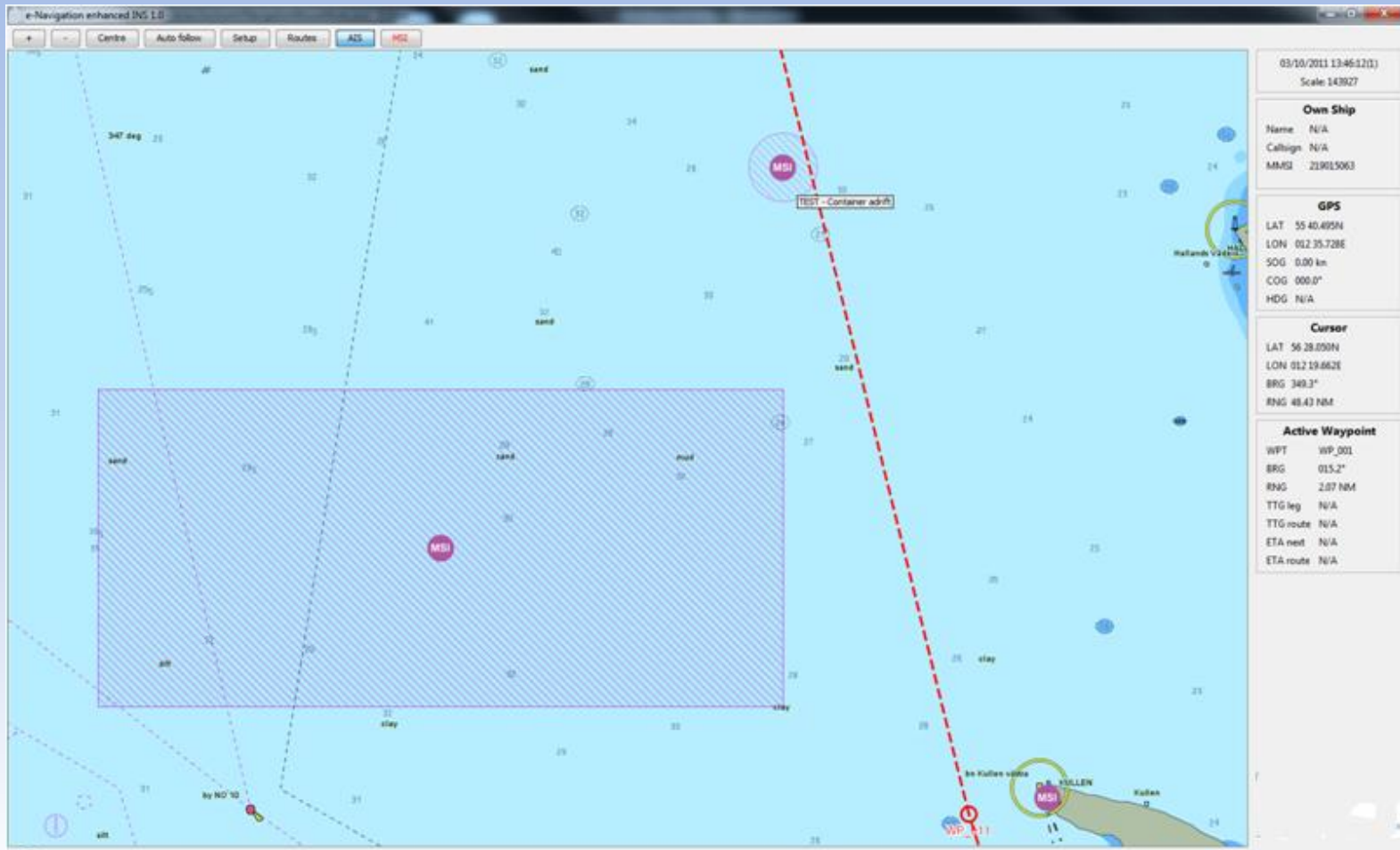
Flensburg, 6<sup>th</sup> March 2013

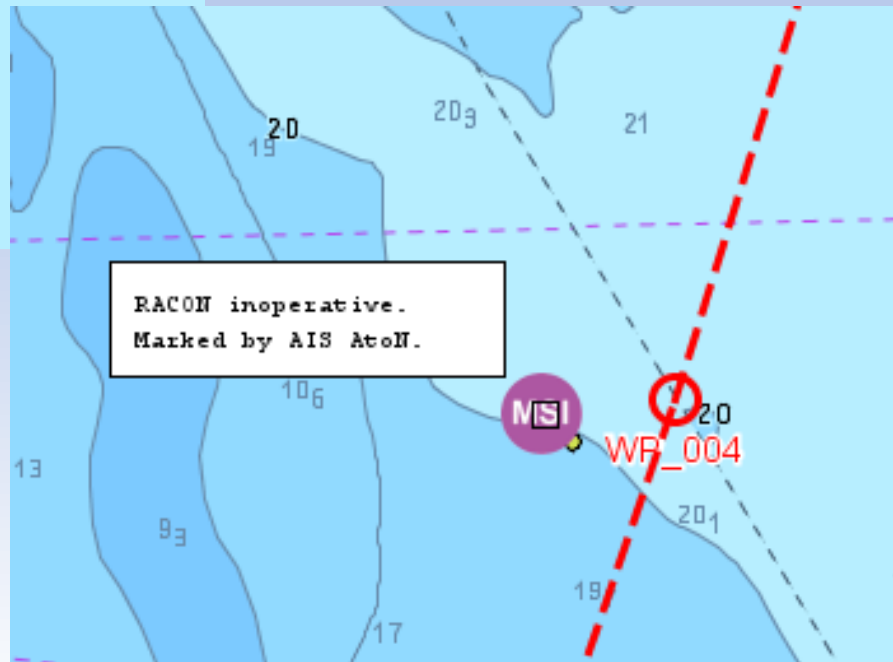
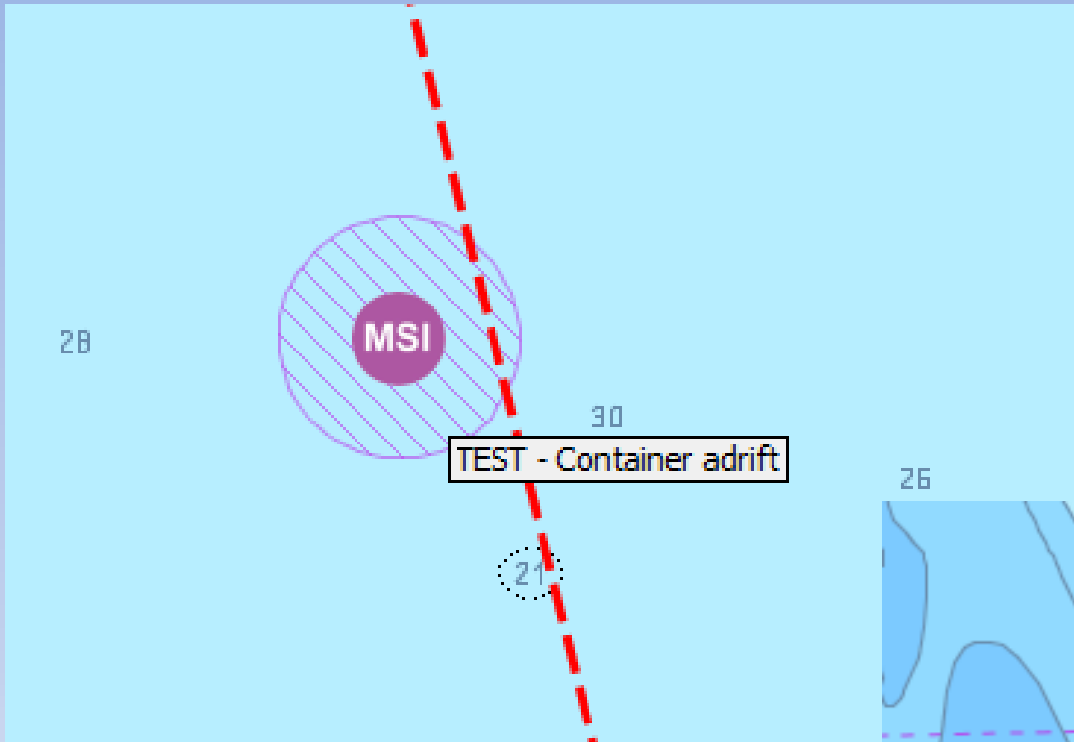
# Maritime Information Services in e- Navigation and in ACCSEAS

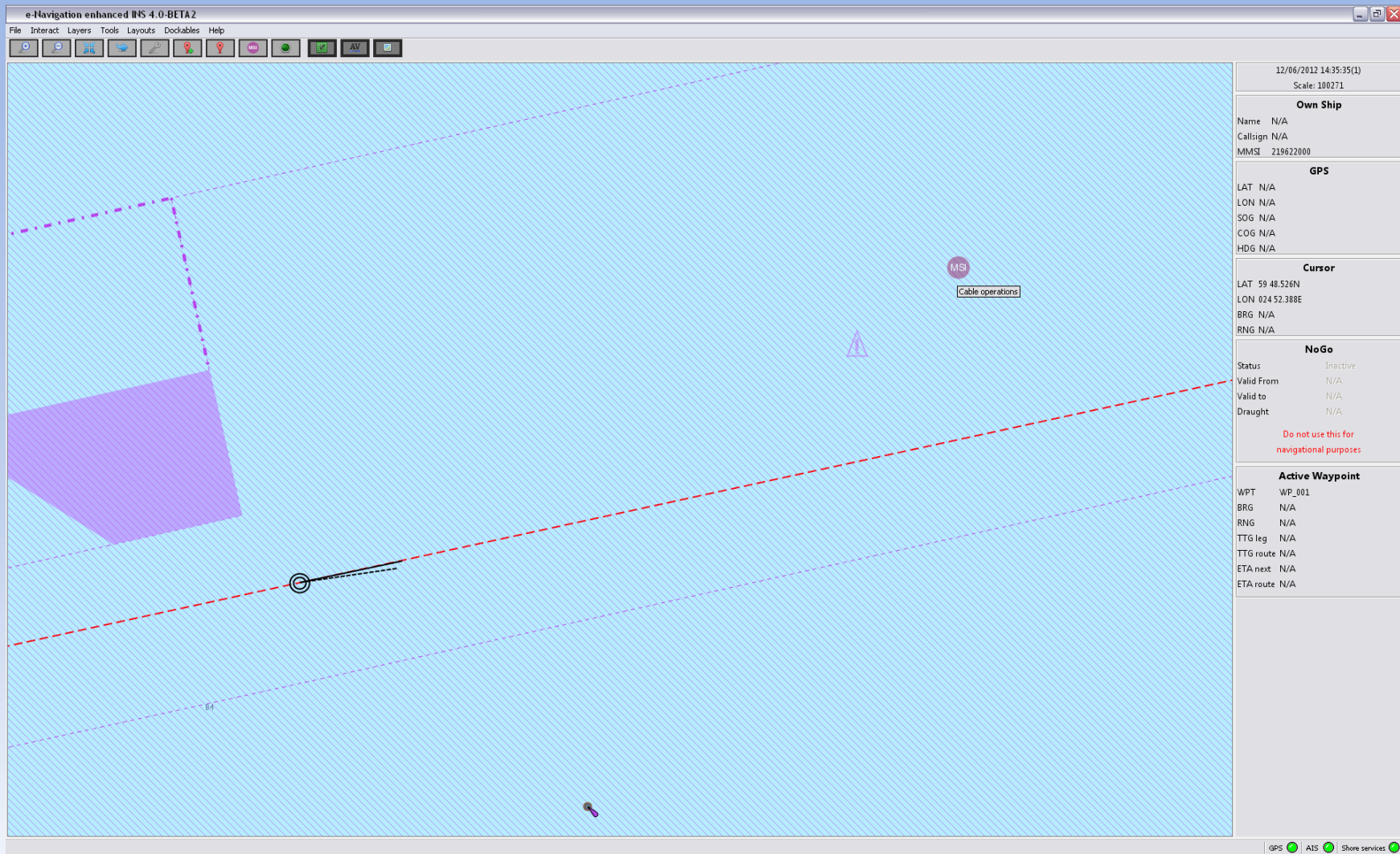
Mads Bentzen  
Danish Maritime Authority/Maritime Technology  
(ACCSEAS WP6 – Test bed Implementation, e-Navigation Services)



# Mariners Notification Service MSI/NM (T) and (P)







e-Navigation enhanced INS 4.0-BETA2

File Interact Layers Tools Layouts Dockables Help

12/06/2012 14:47:38(1)  
Scale: 100743

**Own Ship**  
Name N/A  
Callsign N/A  
MMSI 219622000

**GPS**  
LAT N/A  
LON N/A  
SOG N/A  
COG N/A  
HDG N/A

**Cursor**  
LAT 59 46.608N  
LON 024 43.945E  
BRG N/A  
RNG N/A

**NoGo**  
Status Inactive  
Valid From N/A  
Valid to N/A  
Draught N/A

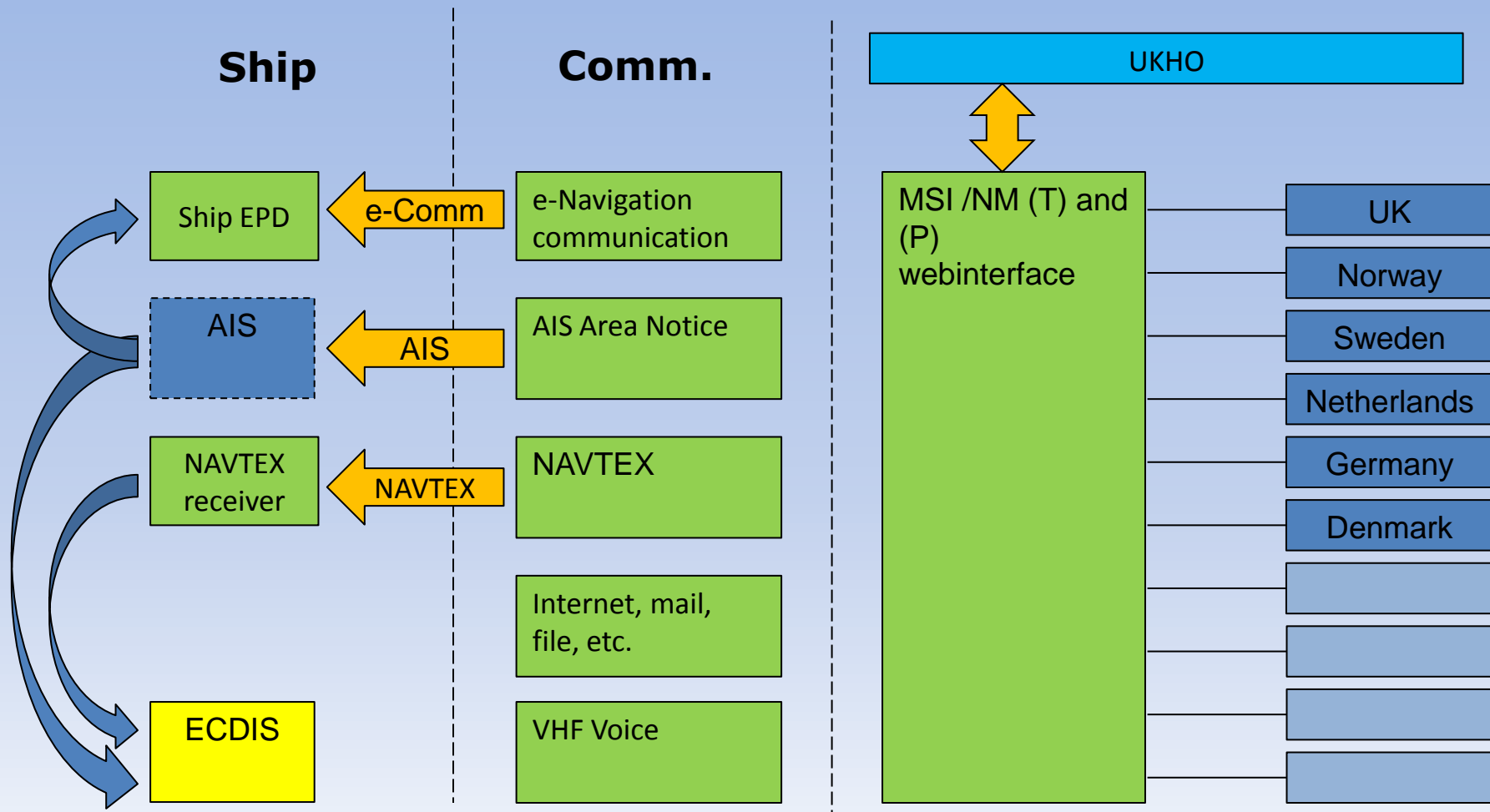
*Do not use this for navigational purposes*

**Active Waypoint**  
WPT WP\_001  
BRG N/A  
RNG N/A  
TTG leg N/A  
TTG route N/A  
ETA next N/A  
ETA route N/A

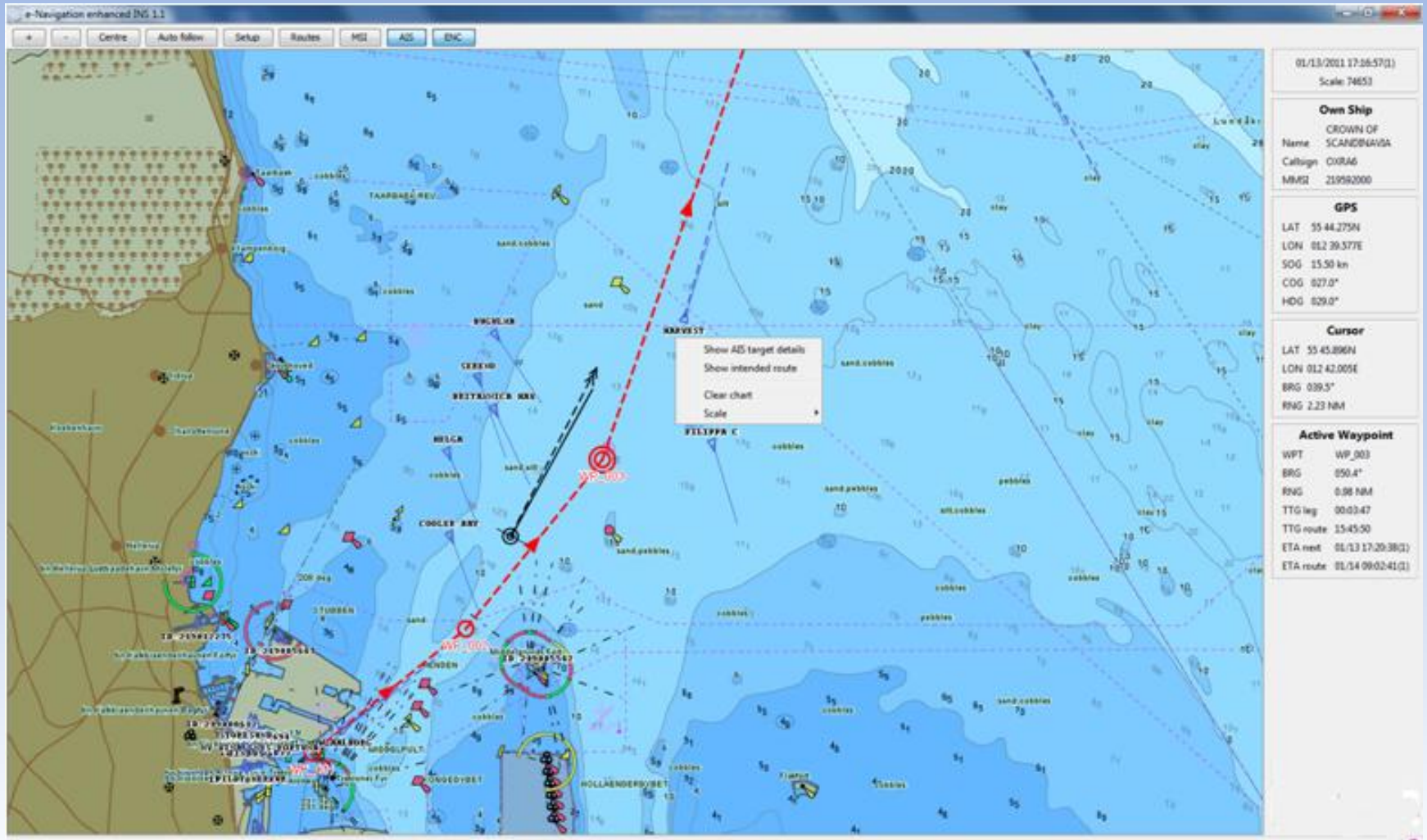
**MSI**  
Cable operations in area!

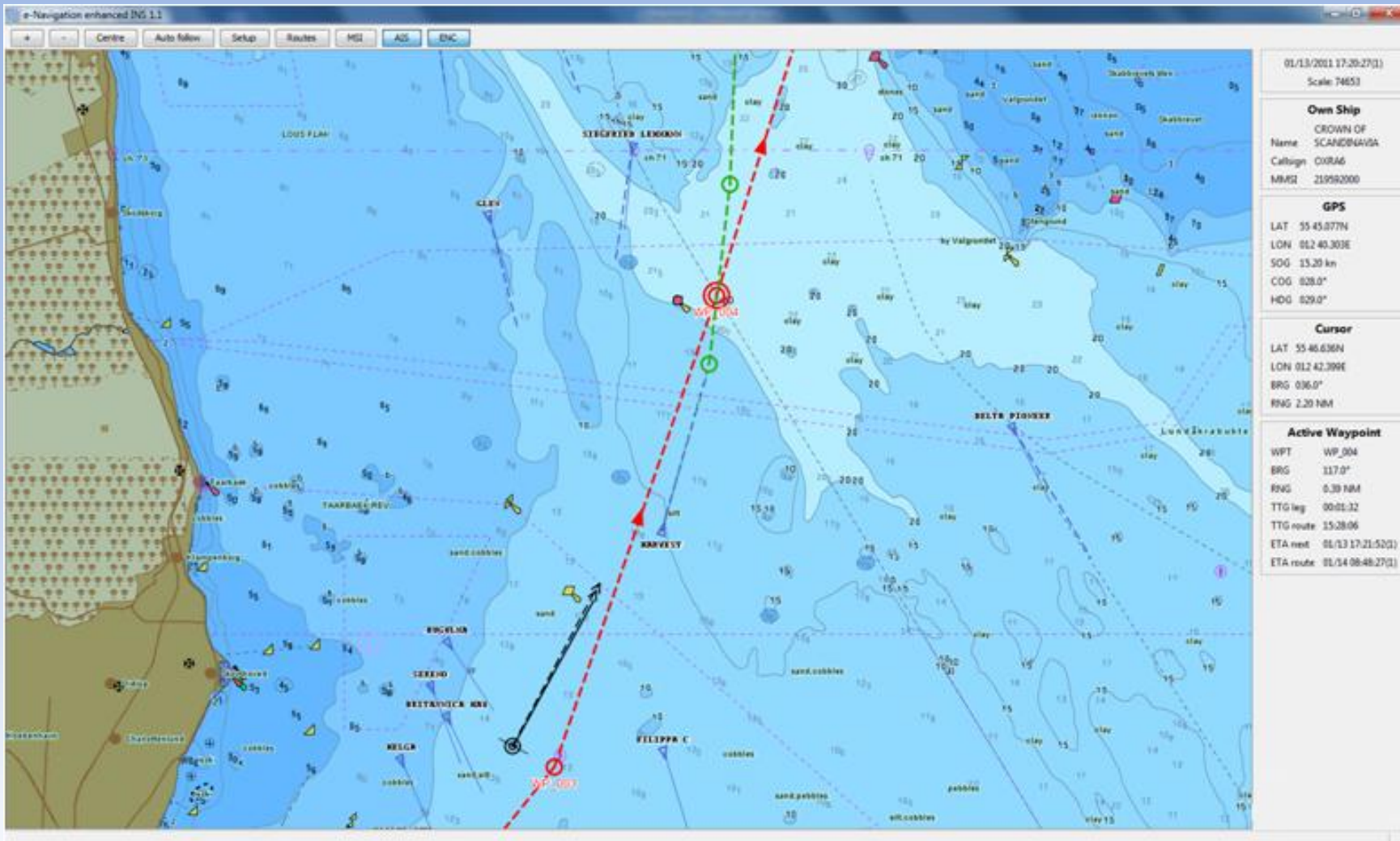
start | Indbakke - Micr... | C:\Documents... | C:\Programmer... | ACCSEAS WP6... | Service descr... | MSI\_largearea... | e-Navigation en... | Søg på pc'en | 14:47





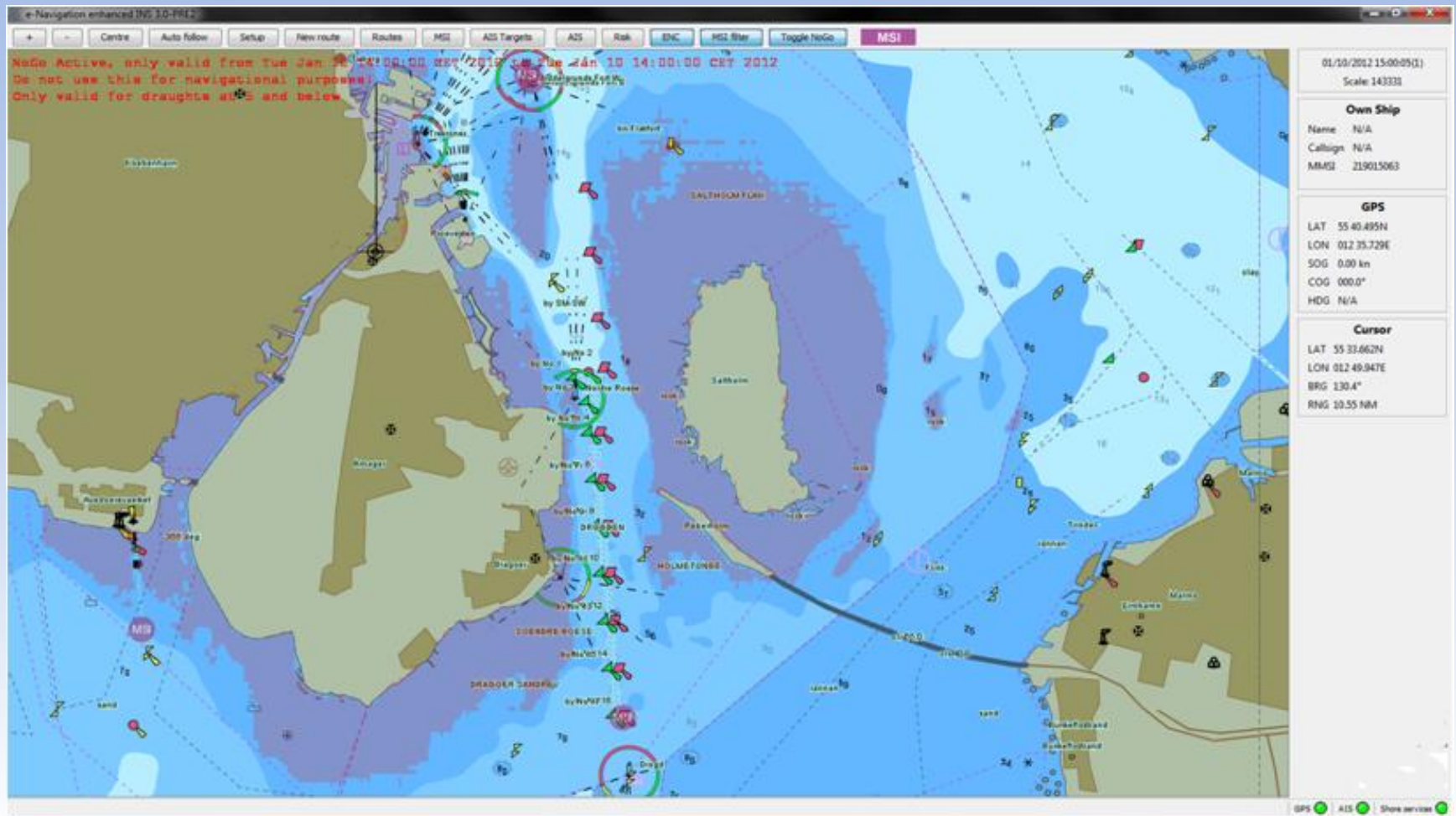
# Exchange of intended routes



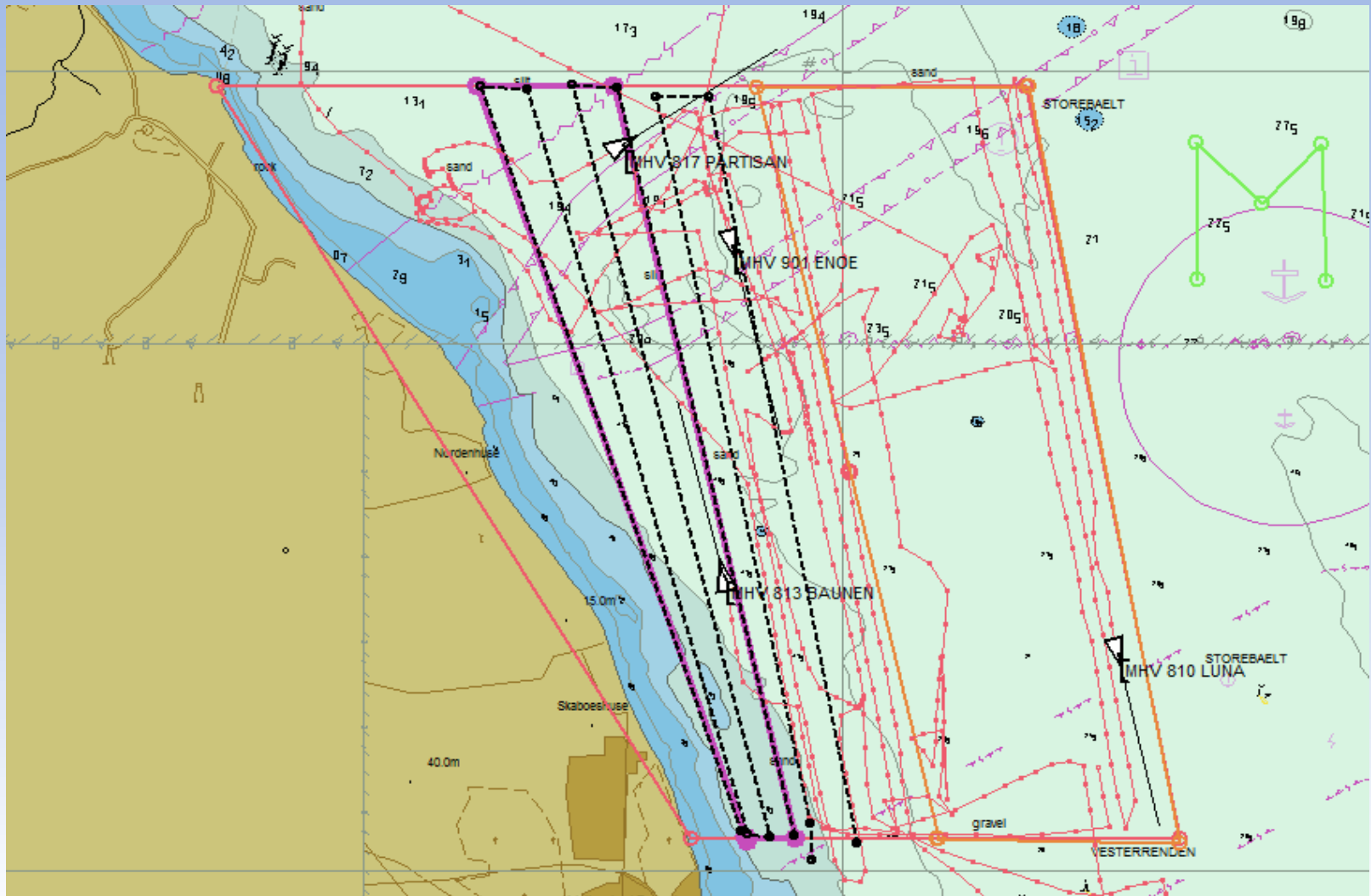




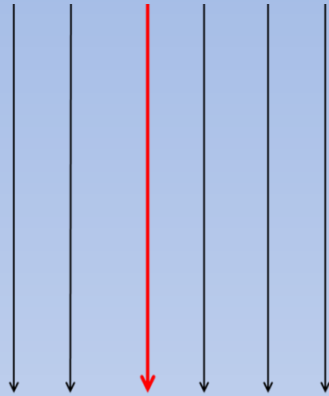
# Dynamic Under Keel Clearance Service No-Go Areas



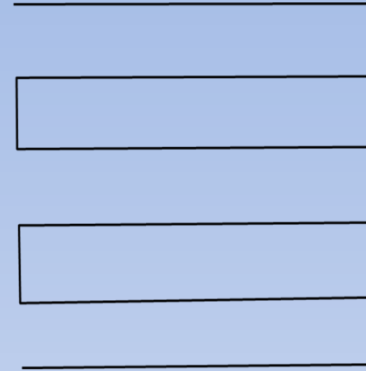
# Vessels Operations Coordination Tool (VOCT)



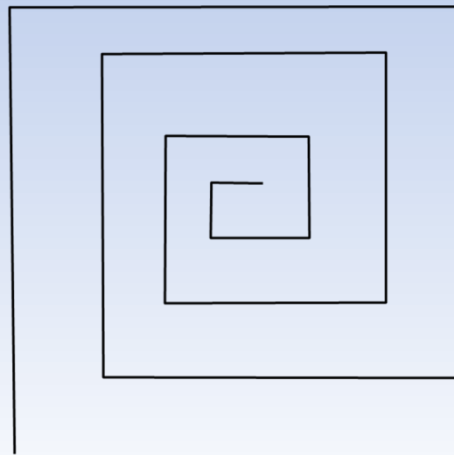
# Standard Search Patterns



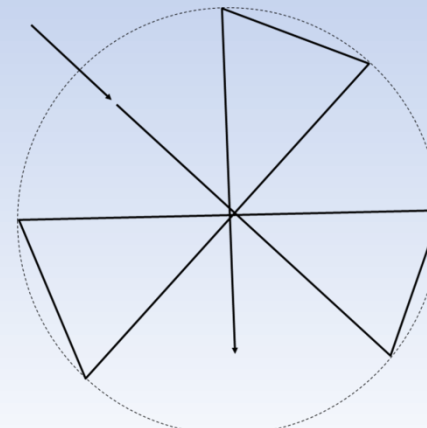
Kratt-sök (Fork search)



Parallell-sök (Parallel search)

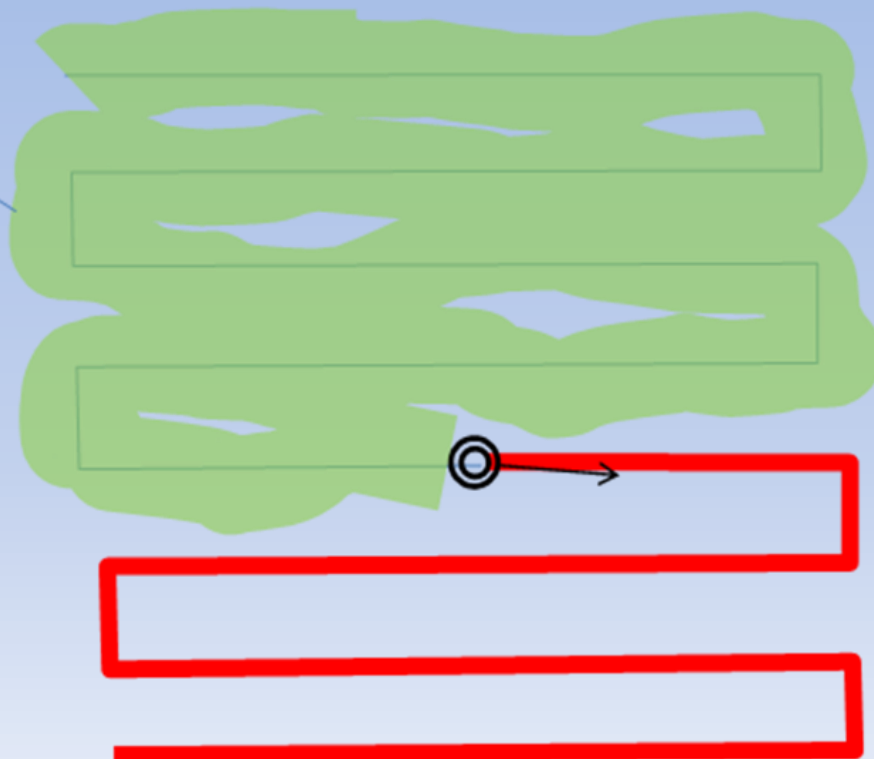
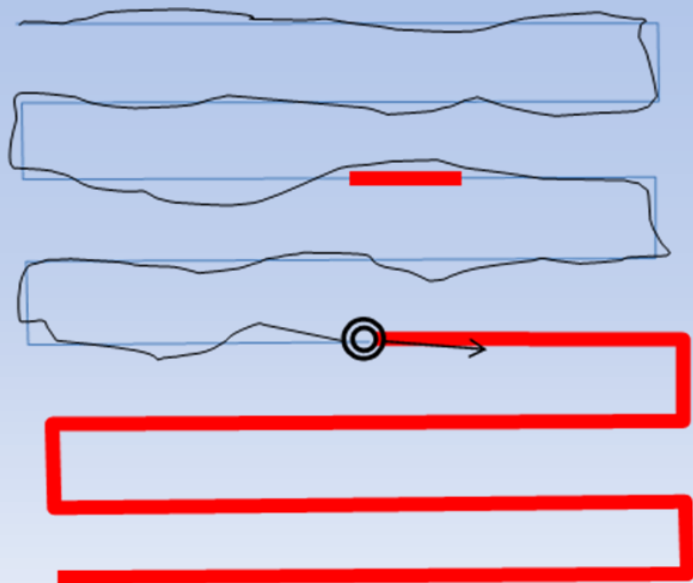


Expander-sök (Expander search)



Sektor-sök (Sector search)

Stroke width depend on  
sea state, visibility  
and eye height



# Thank you for your time

Questions  
or  
comments?

